

## CONTAINER DIMENSIONS

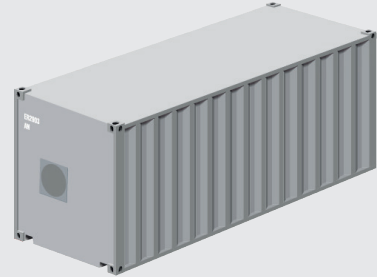
What fits in a 20 ft container and when do need a 40 ft?

### DRY CONTAINERS



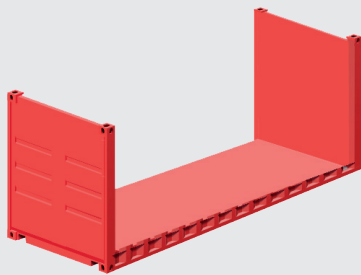
20 FT DRY CONTAINER	40 FT DRY CONTAINER
Inner size length: 5.897 mm	Inner size length: 12.031 mm
Inner size width: 2.348 mm	Inner size width: 2.348 mm
Inner size height: 2.390 mm	Inner size height: 2.390 mm 2.695 mm (high cube)
Door opening width: 2.336 mm	Door opening width: 2.336 mm
Door opening height: 2.280 mm	Door opening height: 2.280 mm 2.585 mm (high cube)
Pallet load: 11 Euro pallets 800 x 1200 mm	Pallet load: 23 to 24 Euro pallets 800 x 1200 mm

### REEFER CONTAINERS



20 FT. REEFER CONTAINER	40 FT. REEFER CONTAINER
Inner size length: 5.458 mm	Inner size length: 11.587 mm
Inner size width: 2.290 mm	Inner size width: 2.290 mm
Inner size height: 2.262 mm	Inner size height: 2.590 mm
Door opening width: 2.336 mm	Door opening width: 2.336 mm
Door opening height: 2.280 mm	Door opening height: 2.280 mm
Max payload: 27.538 kg	Max payload: 29.400 kg

### FLAT RACK CONTAINERS



20 FT FLAT RACK CONTAINER	40 FT FLAT RACK CONTAINER
Inner size length: 5.958 mm	Inner size length: 11.986 mm
Inner size width: 2.018 mm	Inner size width: 2.263 mm
Inner size height: 2.018 mm	Inner size height: 1.968 mm
Max payload: 42.100 kg	Max payload: 49.100 kg

### OPEN TOP CONTAINERS



20 FT OPEN TOP CONTAINER	40 FT OPEN TOP CONTAINER
Inner size length: 5.893 mm	Inner size length: 12.032 mm
Inner size width: 2.346 mm	Inner size width: 2.346 mm
Inner size height: 2.384 mm	Inner size height: 2.381 mm
Door opening width: 2.338 mm	Door opening width: 2.336 mm
Door opening height: 2.244 mm	Door opening height: 2.280 mm
Max payload: 30.000 kg	Max payload: 28.450 kg